

SWRPA

South Western Regional Planning Agency

South Western Regional Metropolitan Planning Organization

Dr. Floyd Lapp, FAICP

Susan Prosi

September 24, 2008

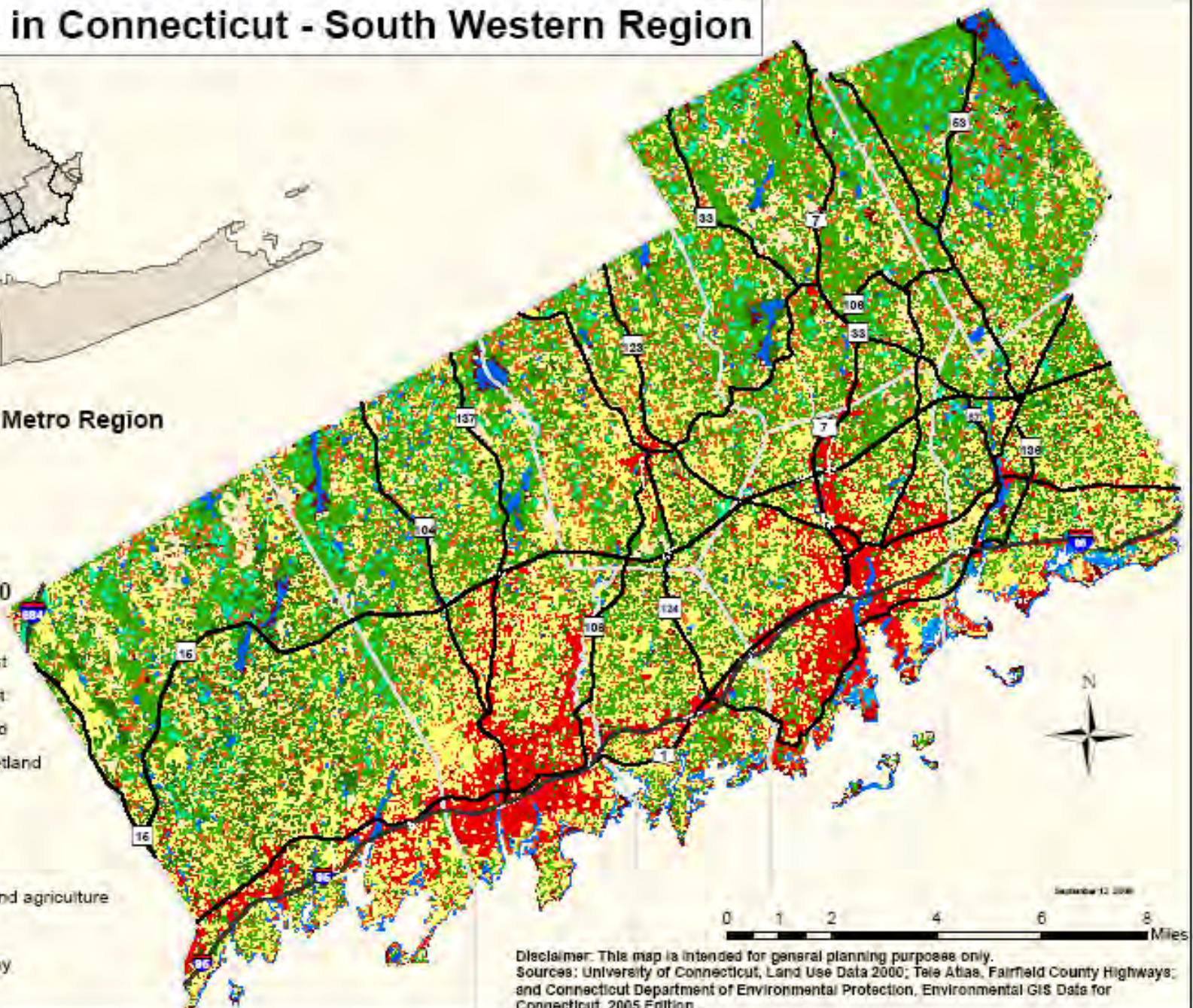
Land Use in Connecticut - South Western Region



New York Metro Region

Legend

-  Highways
- CT Land Use 2000**
-  Developed
-  Coniferous forest
-  Deciduous forest
-  Forested wetland
-  Non-forested wetland
-  Tidal wetland
-  Water
-  Turf and grass
-  Other grasses and agriculture
-  Barren
-  Utility right of way
-  No data



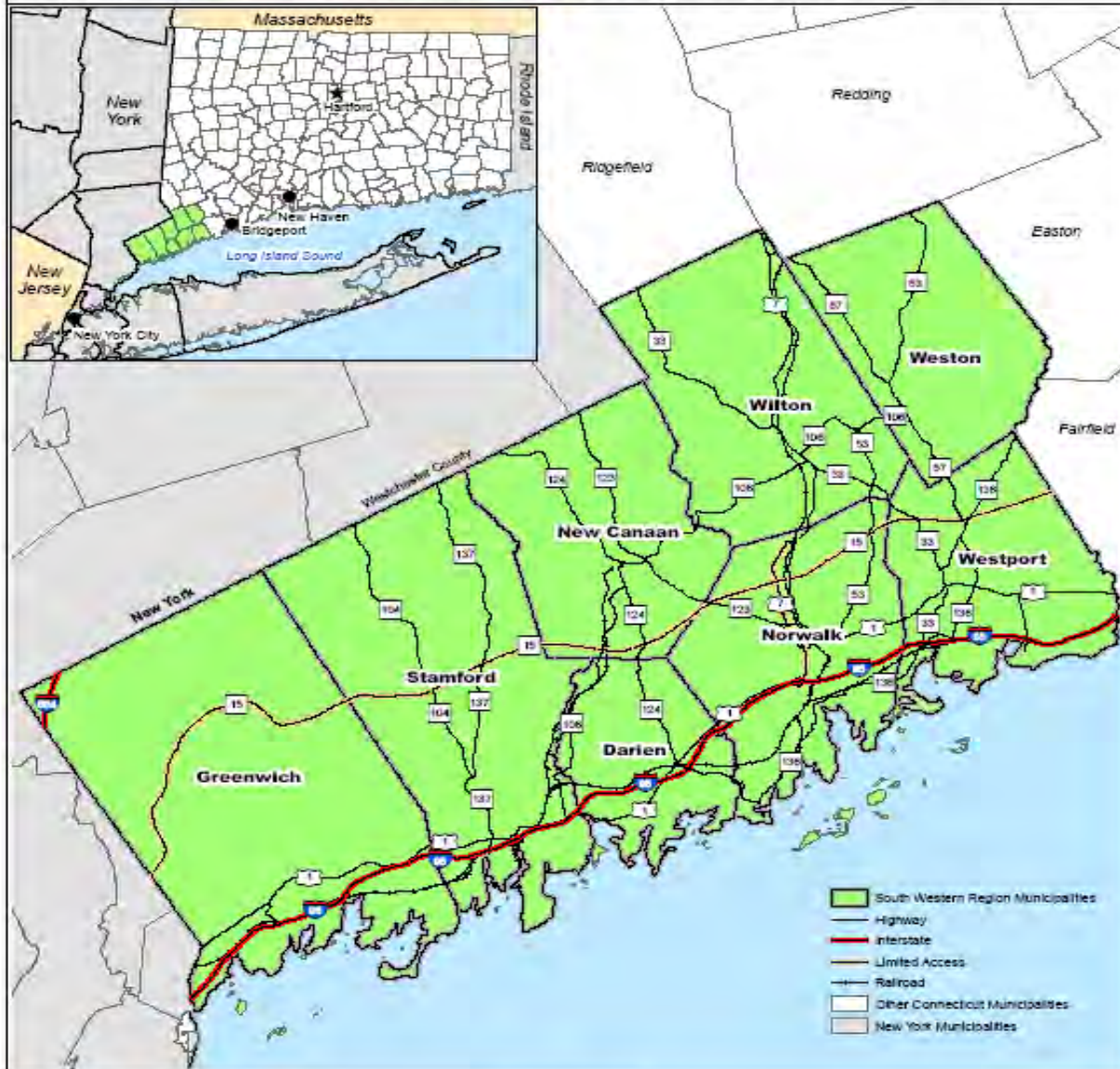
September 12, 2006

0 1 2 4 6 8 Miles

Disclaimer: This map is intended for general planning purposes only.
Sources: University of Connecticut, Land Use Data 2000; Tele Atlas, Fairfield County Highways;
and Connecticut Department of Environmental Protection, Environmental GIS Data for
Connecticut, 2005 Edition.

Location and Context

Fourth Plan of Conservation and Development, 2005-2015



SWRPA

South Western Region Planning Agency



Prepared on October 20, 2005



Disclaimer: This map is intended for general planning purposes only.

Sources: Connecticut Department of Transportation, Road Maps; Connecticut Office of Policy and Management, Conservation and Development Policies Plan for Connecticut Localities; US Census Bureau, TigerLine 2000

**Unify South Western Region and the
New York Metropolitan Area with a Series
of Shared Transportation Priorities**

**MAJOR INTER-REGIONAL AND INTERSTATE
CONNECTIONS:**

**METRO NORTH RR, I-95, I-287 AND OTHER
INTERSTATES**

TRANSIT

- 1) **POLICY, PLANNING, AND FUNDING**

- 2) **IMPROVED RAIL SERVICES:**
 - **Metro North**
 - **New Canaan and**
 - **Danbury Branch Lines**

- 3) **PROMOTING TOD NEAR TRAIN STATIONS**

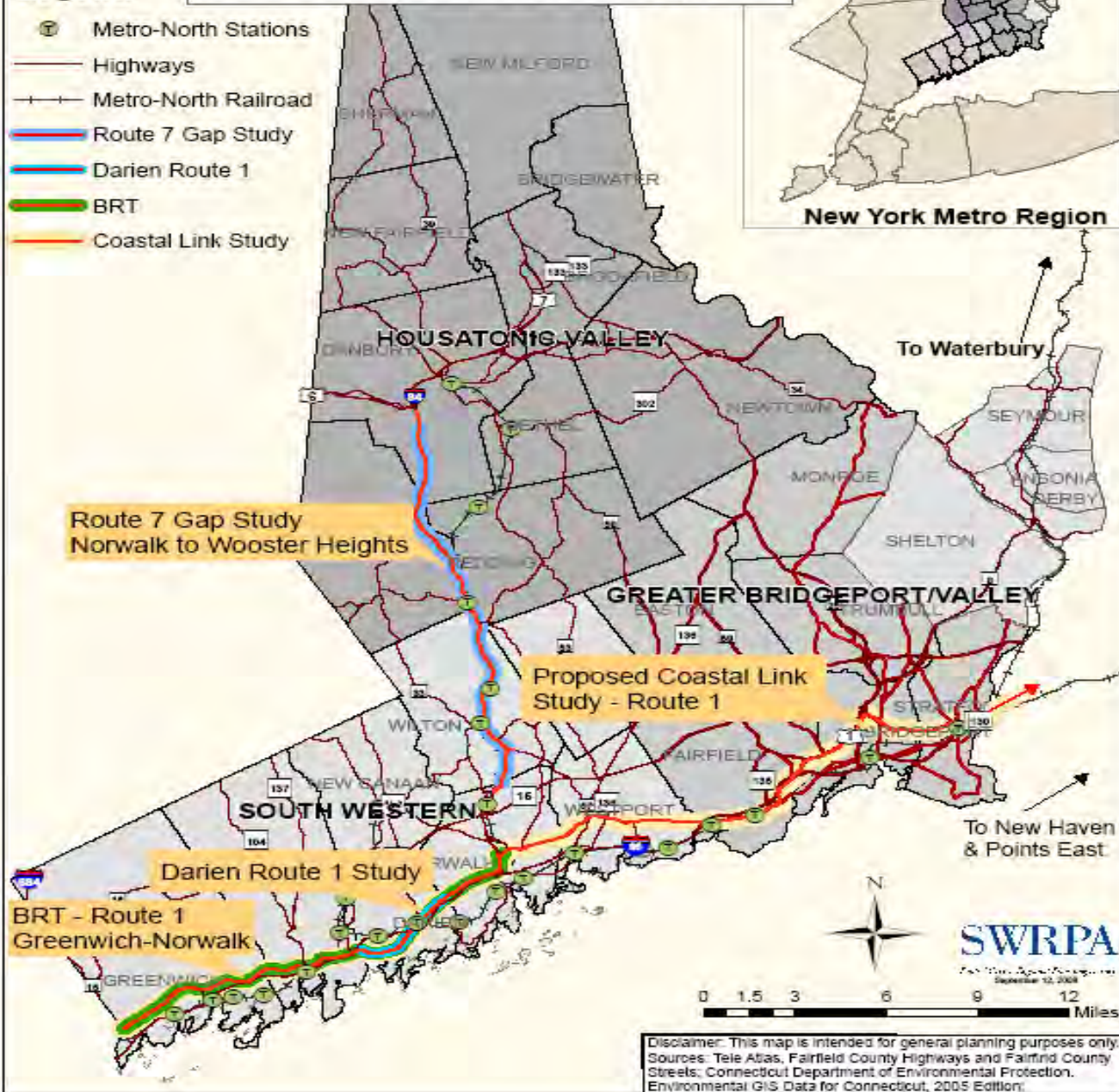
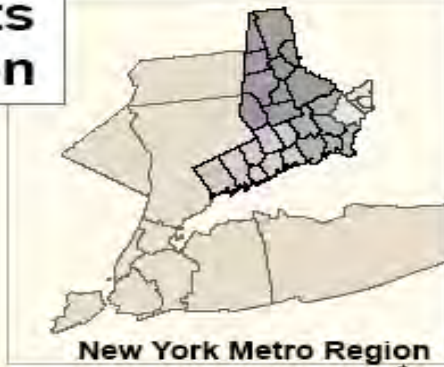
HIGHWAYS

- **Connecticut Congestion Statewide Study.**
- **Congestion mitigation measures along I-287.**

Transportation Projects South Western Region

Legend

- Metro-North Stations
- Highways
- Metro-North Railroad
- Route 7 Gap Study
- Darien Route 1
- BRT
- Coastal Link Study



Route 7 Gap Study
Norwalk to Wooster Heights

Proposed Coastal Link
Study - Route 1








Darien Route 1 Study

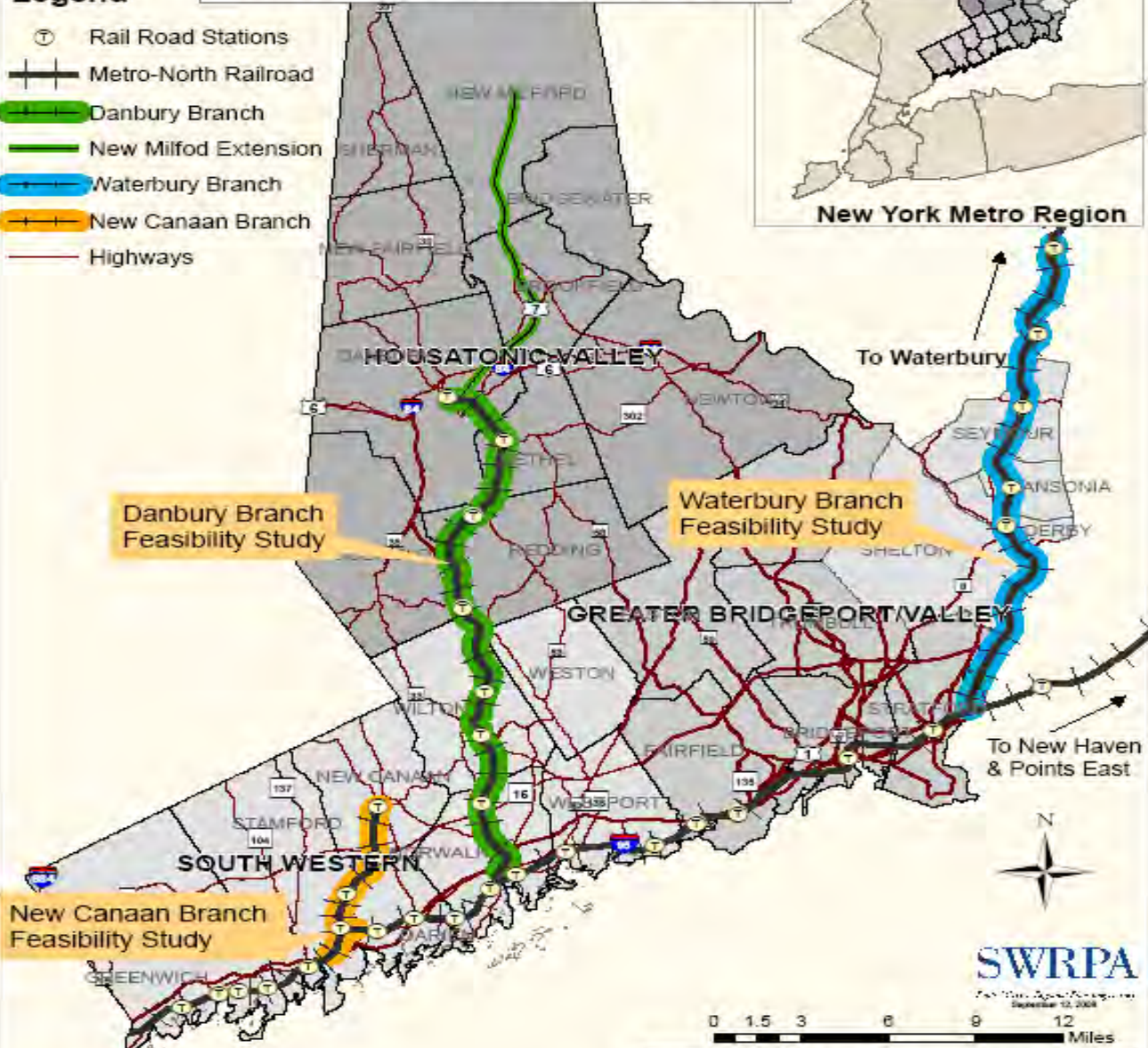
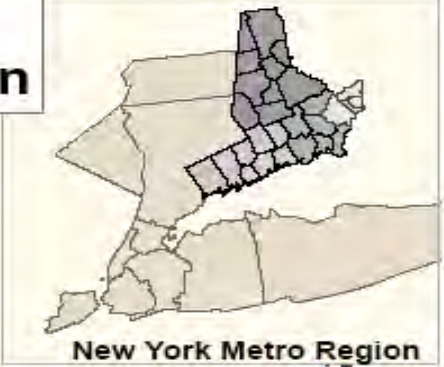
BRT - Route 1
Greenwich-Norwalk

Disclaimer: This map is intended for general planning purposes only.
Sources: Tele Atlas, Fairfield County Highways and Fairfield County
Streets; Connecticut Department of Environmental Protection.
Environmental GIS Data for Connecticut, 2005 Edition.

Branchline Studies South Western Region

Legend

-  Rail Road Stations
-  Metro-North Railroad
-  Danbury Branch
-  New Milford Extension
-  Waterbury Branch
-  New Canaan Branch
-  Highways



Disclaimer: This map is intended for general planning purposes only.
Sources: Tele Atlas, Fairfield County Highways and Fairfield County Streets, Connecticut Department of Environmental Protection, Environmental GIS Data for Connecticut, 2005 Edition;